



**RIILL'S BUS SERVICE**  
 218 Dutrow Road, Westminster, MD 21157  
 (410) 876-7530 (800) 801-7530  
 staff@rillsbusservice.com (Email)  
 www.rillsbusservice.com (Website)

**TRIPLE CASINO OVERNIGHT GETAWAY**

NOVEMBER 9-10, 2023

Join us for a mini-getaway visiting three casinos in Pennsylvania and Delaware for a chance to win big & enjoy an exciting gaming experience on this 2-day excursion!

Departure/return times and pickup location are as follows:

	<u>DEPART</u>	<u>RETURN</u>
Kohl's, Westminster (Rt. 140 & Market Street) (Rear of parking lot)	9:00 A.M.	7:00 P.M.

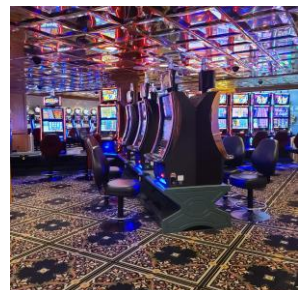
THURSDAY, NOVEMBER 9: We will travel to Central Pennsylvania this morning making our first casino stop at **Hollywood Casino at Penn National** located in Grantville, PA. The gaming floor has an exciting array of over 2,300 hot slot machines with traditional reel games and video terminals, 56 action-packed table games, simulcast racing, and Sportsbook. Grab a bite to eat for lunch at The Eatery onsite. (Hollywood Casino is currently not offering any group casino bonuses.) We will then travel a short distance to the historic industrial area of Bethlehem, PA to check into our overnight accommodations at:

**WIND CREEK BETHLEHEM** (484)777-7777  
 77 Wind Creek Blvd.  
 Bethlehem, PA 18015

Enjoy time on your own to explore all that Wind Creek Bethlehem has to offer including over 2,000 state-of-the-art slot machines, over 150 table games including a newly renovated poker room, live dealer stadium gaming, Sportsbook, entertainment, outlet stores, indoor pool, and numerous dining options. The hotel features comfortable, luxurious accommodations to ensure a good night's sleep. The package for Wind Creek Bethlehem includes **\$40 free slot play and \$20 meal voucher**.

FRIDAY, NOVEMBER 10: We will depart from Wind Creek late morning to start our travels homeward. Our mid-day casino stop will be at **Casino at Delaware Park** in Wilmington, Delaware. Delaware Valley's premier gaming venue offers a wide range of slot machines, electronic & live table games, a full-service Poker Room, and live & simulcast racing. Various dining options are available throughout the facility. The package for Casino at Delaware Park includes **\$20 free slot play**. We will then travel home to complete our gaming getaway!

**\*PLEASE NOTE: Casino packages are subject to change without notice. All passengers must have a valid & unexpired government-issued form of photo ID & must be at least 21 years of age to enter casinos & receive casino packages.**



PRICE PER PERSON:

SINGLE	\$390.00	(PRICE INCLUDES: motorcoach transportation,
DOUBLE	\$310.00	lodging, luggage handling, casino packages & meal
TRIPLE	\$275.00	vouchers as listed in above itinerary)
QUAD	\$260.00	

A DEPOSIT OF \$75 PER PERSON IS REQUIRED WITHIN TWO WEEKS OF BOOKING. ALL RESERVATIONS AND FINAL PAYMENT MUST BE MADE BY **SEPTEMBER 26, 2023**. Payment can be made by cash, check or money order and mailed to our office at above address. Luggage tags and final itineraries are mailed about 2 weeks prior to the trip. Bills are not mailed for balances due, however, courtesy calls as a reminder will be made in case payment is not received by due date. Bus driver & tour director gratuities are not included in tour cost.

In the event of a cancellation, any non-refundable expenses for package inclusions such as reserved seat tickets, admissions, meals, or lodging may be forfeited. Rills will guarantee full refund only if the cancelled reservations can be resold to another customer. In the event where travel companions sharing the same room should need to cancel one or more persons in that room, the remaining passengers will be responsible for paying the supplemental charge to change occupancy.

We strongly suggest purchasing trip cancellation insurance which is available through Travel Guard Insurance. For specific questions regarding cancellation insurance, call Travel Guard at (800)826-1300. You will need to refer to Agency #50810 (Rill's Bus Service as agent). All policies will need to be quoted and/or purchased electronically, or by calling the 24-hour service center (paper applications are no longer accepted). Insurance coverage information will be mailed to you upon request to Rill's Bus Service.

Our motorcoach is equipped with restroom, reclining seats, air-conditioning/heating as needed, luggage compartments, and electrical outlets. Smoking of any kind is strictly prohibited onboard the motorcoach. The consumption of alcoholic beverages by any tour member while onboard our coach is also strictly prohibited. While every reasonable effort will be made to handle your luggage carefully, Rill's Bus Service will not assume any liability for lost or damaged luggage, due to breakage, theft, hotel or carrier handling, fair wear and tear, etc.

CASUAL CLOTHING is appropriate for the entire tour. Comfortable walking shoes are highly recommended.

Rill's Bus Service reserves the right to change itineraries and reservations at their discretion, with or without notice, if in the best interest of the customer and to improve the quality of the tour, which could be necessary for a variety of reasons including, but not limited to, local weather conditions, cancellations/substitutions for trip inclusions made by outside vendors, and/or any other circumstances beyond their control. Rill's Bus Service acts only as an agent on behalf of tour patrons in all matters relating to tour package inclusions, except transportation by their own vehicles, and is not responsible for any damage, delay, loss, injury, or accident to person or personal property when passenger is participating in tour activities and/or traveling by other transportation means while on tour prepared by Rills. Furthermore, Rill's is not responsible for any additional expenses incurred as a result of sickness, injury, weather, or any other unforeseen circumstances that are beyond their control.